



WASHINGTON STATE  
UNIVERSITY

# Emergency Management Emergency Preparedness

Shawn Ringo

Director

Occupational Health & Safety

Emergency Management

Gary Jenkins

Chief of Police

WSU Pullman

Jason Sampson

Director

Environmental Health & Safety

Emergency Management

# Emergency Management



- EH&S, Emergency Management, and Fire Safety supports the WSU system, working closely with Public Safety, Facilities Services, The Office of Research Assurances, Colleges, and Finance and Administration Information Services (IT)
- WSU System Emergency Management engages regularly with representatives from each Campus, Research Extension Center, and County Extension
- WSU Emergency Management partners with State and local agencies for mutual support via mutual agreements and Combined Comprehensive Emergency Management Plans



# Emergency Management Response by Emergency



- WSU Emergency Management and our partners have established response protocols for many emergency scenarios, the most common include:
  - Chemical Spill Response – EH&S provides cleanup and decontamination for most chemical spills, larger spills include the Fire Department as Incident Command
  - Inclement Weather – Snow/Ice, Flooding, Wildfire/Smoke
  - Power Outages/Utility Failures
- WSU Emergency Management also prepares protocols for low frequency but high-risk events, such as:
  - Bomb threats, or
  - Active Shooter



# Alert Systems



- WSU maintains an emergency notification system to alert students, faculty, staff, visitors and partners
  - Everbridge – the user may opt-in for notifications via text, phone, and e-mail
  - Outdoor Warning Systems
  - Alertus – notifies users via workplace computer screen capture
  - Additional information and updates are provided at <https://alert.wsu.edu/>
- Clery requirements
  - Emergency alerts
  - Timely warnings

WSU

# Regular Drills & System Tests



Emergency management conducts a test of the emergency notifications system once each semester. The test may simultaneously include activating building exterior lockdown systems (that do not preclude exit) and tracking the response to the lockdown with campus security cameras.

# Threat Assessment Team



- EP 42: Policy on Threat Assessment
- Multidisciplinary Team
- Assess threats to safety of the WSU community
- Recommendations to respective Chancellor

WSU

# Emergency Operations Management Team (EOT)



- BPPM 50.39.6 - Safety & Security – Emergency Planning & Preparedness
- Also known as the Critical Incident Management Team
- Multidisciplinary Team
- Manages threats and emergencies beyond original recommendations by the Threat Assessment Team

# Inclement Weather Advisory Group

- Emergency Management reviews and shares National Weather Service advisories with system representatives
- When NWS predicts inclement weather, the advisory group convenes to evaluate input from local Facilities (e.g. snow removal), Public Safety, WSDOT, State Patrol, Public Transit and local school districts
- The advisory group provides a recommendation for delayed start, closure or early release to the Chancellor
- Similar approaches apply to local flooding, wildfires and wildfire smoke

WWSU



# Continuity & Emergency Response Planning



- Emergency Management provides WSU Ready as system-wide Continuity of Operations Planning (COOP) tool
- WSU Ready guides campus users through COOP, helping them identify:
  - Critical Functions performed by the department, and the factors needed for the continuance of those functions.
  - Information, Strategies, and Procedures that will help during and after the event.
  - Action Items that lessen the impact of these events and make us better ready to deal effectively with emergencies and disasters.



# Ad Hoc Training



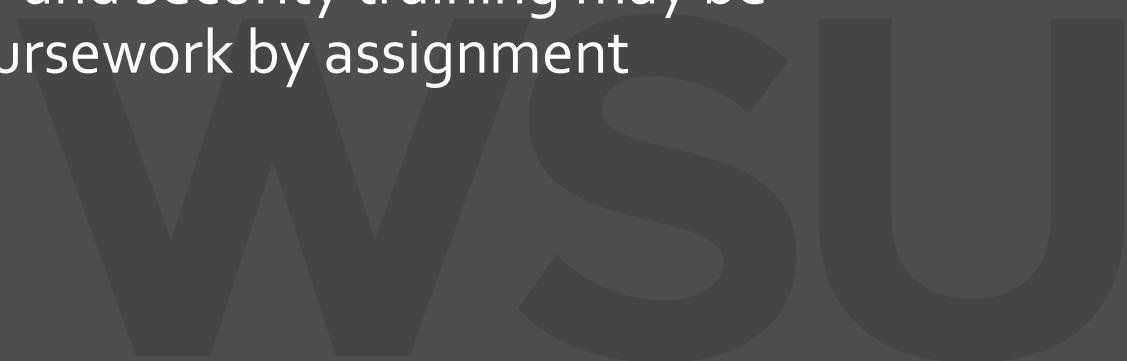
- Emergency Management provides emergency notification training to partners across the WSU system. This includes campus and extension center training as well as training for individual departments/areas.

WSU

# Online Training



- EH&S and Emergency Management provide online active shooter and other safety and security trainings to WSU employees and students via multiple delivery methods:
  - The Emergency Management website <https://oem.wsu.edu/>
  - Skillsoft/Percipio – WSU’s employee training Learning Management System (LMS)
  - Canvas – WSU’s student LMS, where safety and security training may be completed electively, or integrated into coursework by assignment



# WSU Pullman Emergency Management



- As the flagship and the only residential campus in the WSU system, Emergency Management also provides direct support to the WSU Pullman campus
- Continuously conducting a comprehensive review of emergency response protocols and reviewing system-wide processes for best practice implementation

WSU

# Interagency Agreements

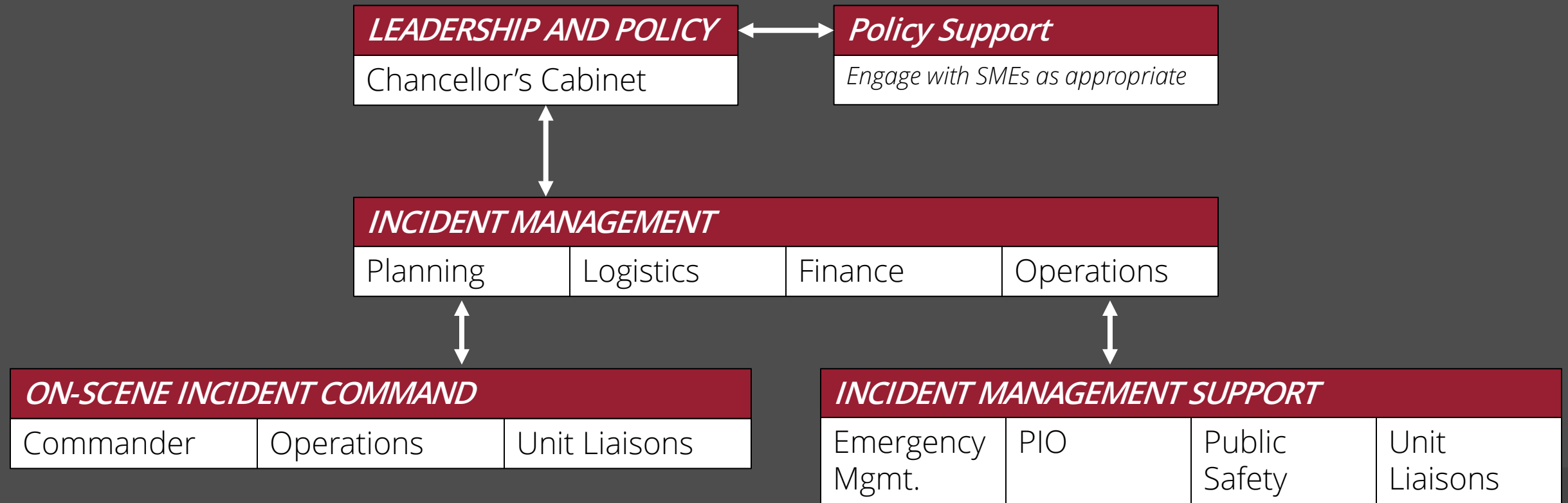


- WSU Pullman has established agreements with the following agencies in support of emergency management:
  - Whitman County Emergency Management
  - Whitman County Health Department
  - State Department of Health
  - Whitman County Sheriff's Department
  - Pullman Police Department
  - Fire District #12
  - Pullman Fire Department
  - Whitman Hospital
  - Pullman Regional Hospital
  - Red Cross
  - WHITCOM
  - USDA

# Comprehensive Emergency Management Plan

- Coordinated CEMP: WSU Pullman, Whitman County, City of Pullman
- All Hazards Plan
  - Prevention
  - Protection
  - Mitigation
  - Response
  - Recovery
- Incorporates National Incident Management Plan (NIMS)
  - Universities must adopt NIMS if they receive federal grants
- Utilizes Incident Command System (ICS)
- Must follow CEMP for FEMA disaster reimbursements

# WSU Pullman Incident Management Structure



# WSU Pullman Emergency Support Functions

## **#1 Transportation**

Parking Services  
Facilities Services Motor Pool

## **#2 Communications, Information, & Warning Systems**

Information Technology  
Facilities Services-Life Safety

## **#3 Public Works & Engineering**

Facilities Operations

## **#4 Fire (City of Pullman)**

Fire Safety Compliance  
Facilities Operations-Life Safety

## **#5 Emergency Management**

Office of Emergency Management

## **#6 Mass care, Emergency Assistance, Housing, Human Services**

Student Affairs

## **#7 Logistics Management & Resource Support**

Attorney General's Office  
Finance and Administration

## **#8 Public Health & Medical Services**

Health & Wellness Services  
Counseling Services  
Environmental Health & Safety

## **#9 Search & Rescue**

Police Department

## **#10 Oil & Hazardous Materials Response**

Environmental Health & Safety  
Radiation Safety  
Biosafety

## **#11 Agriculture & Natural Resources**

College of Agricultural, Human, and Natural  
Resource Sciences  
College of Veterinary Medicine  
Veterinary Teaching Hospital

## **#12 Energy**

Facilities Services

## **#13 Public Safety & Security**

Police Department

## **#14 Long Term Community Recovery**

Risk Management  
Emergency Management  
Information Technology

## **#15 External Affairs**

University Communications

## **#16 "Community"**

Provost's Office  
ASWSU/GPSA  
Athletics





# WSU Home Football Game EOC



- Emergency Operations Center – ICS
- Incident Commander
- Operations: Unified Command
  - Law Enforcement
  - EMS
- Liaison Officer
- Planning

WSU

# WSU Pullman Power/Utility Outages



- WSU's Steam Plant maintains sufficient backup power generation capability to meet approximately 50% of Pullman campus demands
- The Veterinary Teaching Hospital, and research facilities sensitive to power outages have dedicated emergency generators
- WSU Facilities maintains a prioritized list of facilities to transfer onto backup generator power (steam plant) or to alternative Avista feeders
- During large campus events e.g. Football, the event facility moves to the top of the prioritized backup power list





# WSU Pullman Nuclear Science Center

- EH&S and Emergency Management representatives sit on the Dodgen Research Reactor Safeguards Committee. Per NRC requirements, the facility must conduct an emergency drill every 2 years engaging external/off-site agencies. The following emergency response elements must be evaluated:
  - Licensed medical emergency involving a simulated contaminated individual.
  - Radiological monitoring including contamination control methods, dose rate measurements, nonessential personnel evacuation and record keeping.
  - Communication tests designed to ensure reliability of the system(s) and correct transmission and receipt of messages.
- WSU Police
  - Annual response training
  - Training at Y-12 National Security Complex; Oakridge, TN

WSU

# WSU Pullman Active Shooter Training



- WSU Police receive regular law enforcement response training
  - Include regional law enforcement partners
- WSU Police provides training to faculty & staff upon request

WSU



WASHINGTON STATE  
UNIVERSITY

# Questions?

Shawn Ringo

Occupational Health & Safety

(509) 335-5251

[ringos@wsu.edu](mailto:ringos@wsu.edu)

Gary Jenkins

WSU Police

(509) 335-4484

[gary.jenkins@wsu.edu](mailto:gary.jenkins@wsu.edu)

Jason Sampson

Environmental Health & Safety

(509) 335-9564

[sampsonj@wsu.edu](mailto:sampsonj@wsu.edu)